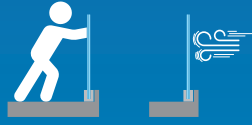


FLOOR MOUNTING



PROFILE 7018



THICKNESS OF GLASS
24 > 34 mm



APPLICATION | RESIDENTIAL | PUBLIC | STADIUM

COMPATIBILITY OF WEDGES
Double Side



POSSIBLE FINISHES



ADJUSTMENT OF GLASS
+ or - 15 mm

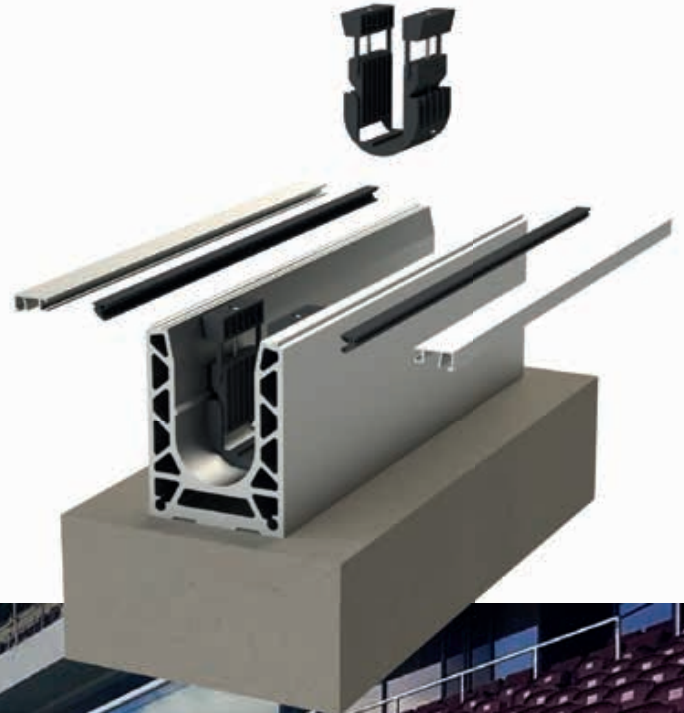


TESTED & APPROVED



All the elements compatible with the **7018 PROFILE** can be found in this section

WEDGES, CLADDINGS & ACCESSORIES > p.96



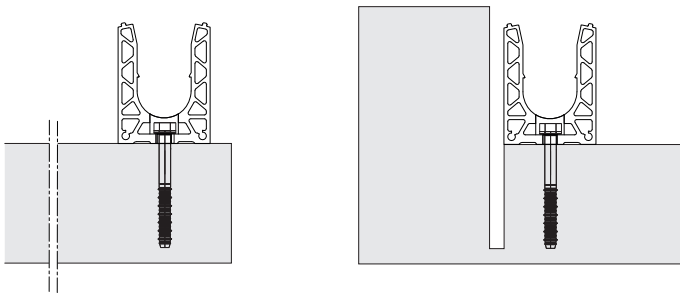
sadev.com



BIM
PRODUCT

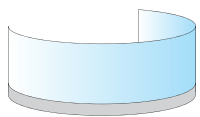
► Reference **0070RAIL18**

TYPE OF USE

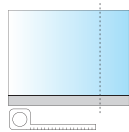


FLOOR MOUNTING

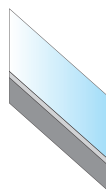
DIFFERENT SPECIFICITIES



CURVED



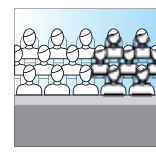
MADE TO MEASURE



INCLINE




HIGH LEVEL



HIGH PERFORMANCE

TECHNICAL SPECIFICATION AND INTERNATIONAL CERTIFICATION

Solutions tested according to regulations of different countries  can be found in the country performance guide.

FLOOR MOUNTING PROFILE 7018



THICKNESS OF GLASS
24 > 34 mm

► Reference **0070RAIL18**

TESTED & APPROVED



HIGH PERFORMANCE

Application stadium C5 / UEFA
In 15.15 PVB

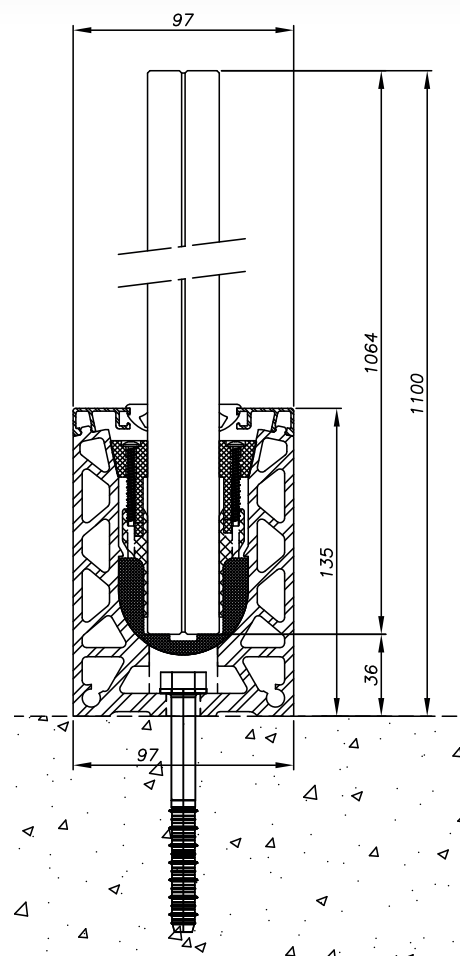
Up to 10.10.10 (tri-fold)



TECHNICAL CHARACTERISTICS

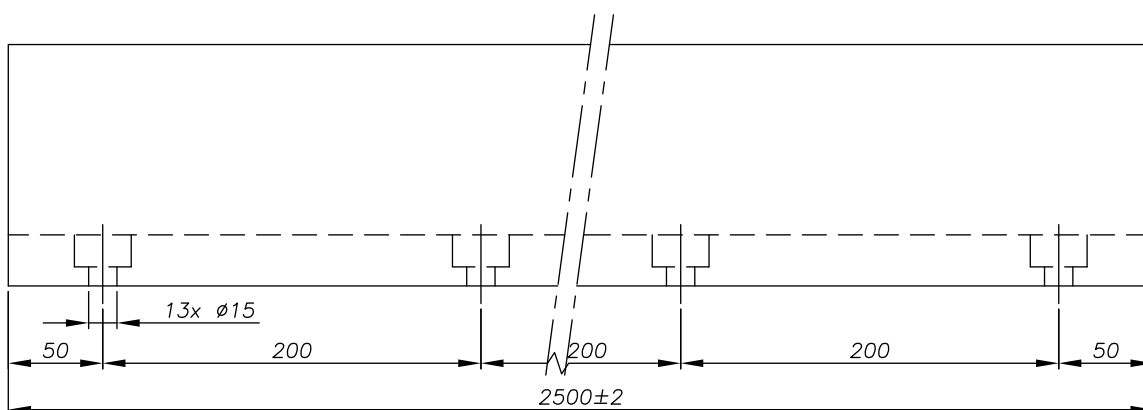
Length	2 500 mm / 5 000 mm (on request)
Width	97 mm
Height of profile	128 mm
Material	Aluminum
Type of application	Residential / public / Stadium
Type of mounting	Floor
Thickness of glass	24 > 34 mm
Height of guardrail	Standard: 2 100 mm Different height on request
Profile finish	Anodized aluminum, raw, RAL
Fixing the profile	From 200 to 400 mm depending on the characteristics of your project.

**FOR MORE INFORMATION
ON ANCHORING THE PROFILE:**
see our country performance guide
or the Technical Advice for each profile.

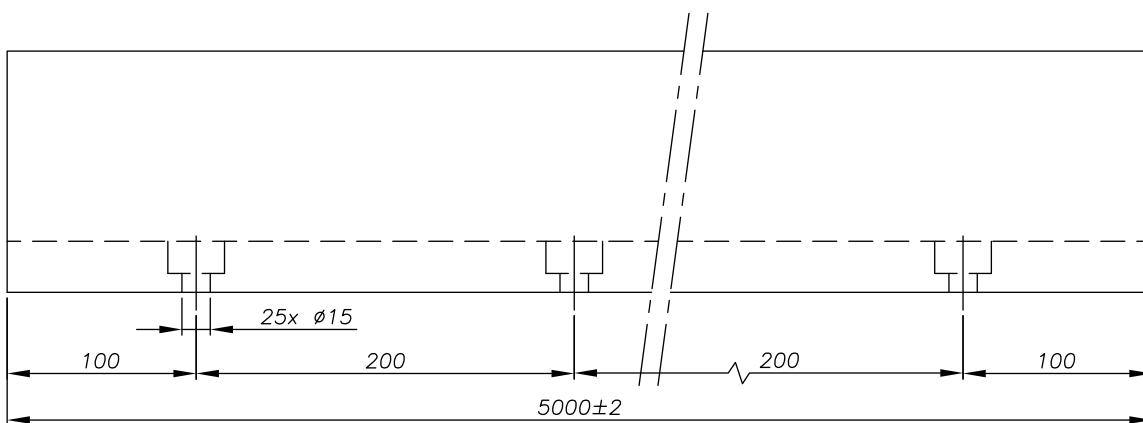


TECHNICAL PLANS

► 2 500 mm - Reference **0070RAIL18**



► 5 000 mm - Reference **0070RAIL28 (on request)**



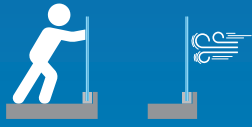
DRAINAGE & EXPANSION

For more details, see **page 50**

FLOOR MOUNTING



PROFILE 7018L



TESTED & APPROVED



All the elements compatible with the **7018L PROFILE** can be found in this section

WEDGES, CLADDINGS & ACCESSORIES > p.96

THICKNESS OF GLASS
24 > 34 mm

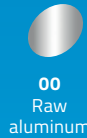


APPLICATION | **RESIDENTIAL** | **PUBLIC** |
STADIUM

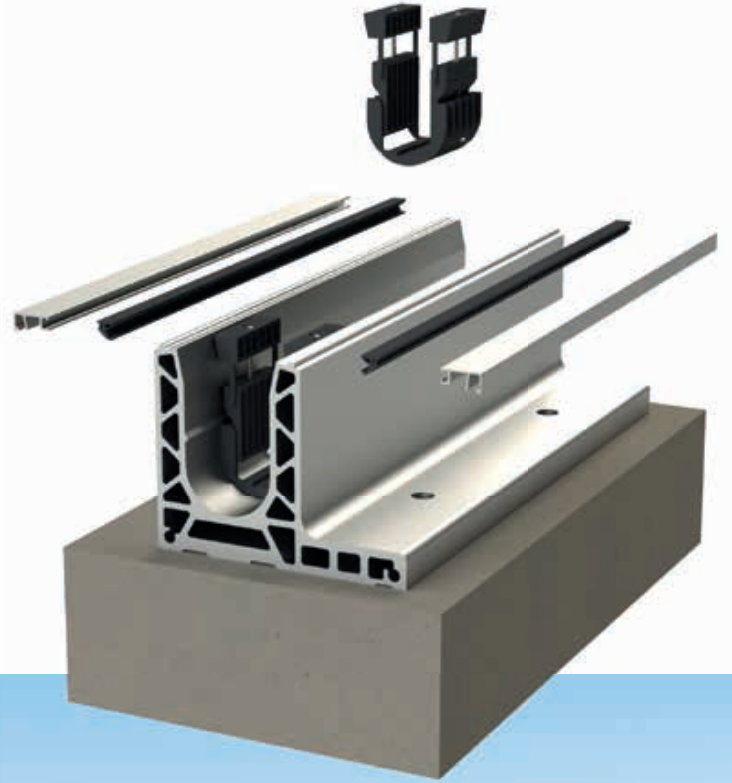
COMPATIBILITY OF WEDGES
Double Side



POSSIBLE FINISHES



ADJUSTMENT OF GLASS
+ or - 15 mm



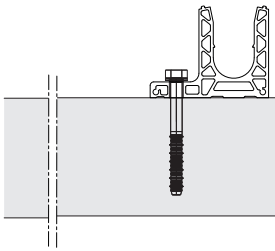
sadev.com



BIM
PRODUCT

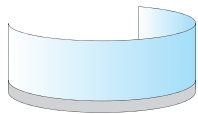
► Reference **0070RAIL18L**

TYPE OF USE

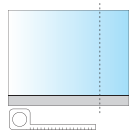


OFFSET FLOOR MOUNTING

DIFFERENT SPECIFICITIES



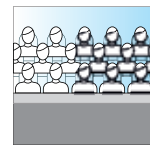
CURVED



MADE TO MEASURE




HIGH LEVEL



HIGH PERFORMANCE

TECHNICAL SPECIFICATION AND INTERNATIONAL CERTIFICATION

Solutions tested according to regulations of different countries  can be found in the country performance guide.

FLOOR MOUNTING PROFILE 7018L



THICKNESS OF GLASS
24 > 34 mm

► Reference **0070RAIL18L**

TESTED & APPROVED



STADIUM
APPLICATION

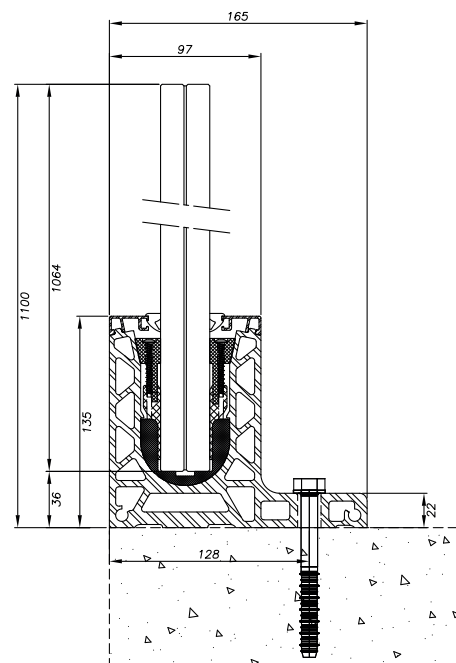
Special slab edge

Up to 10.10.10 (tri-fold)



TECHNICAL CHARACTERISTICS

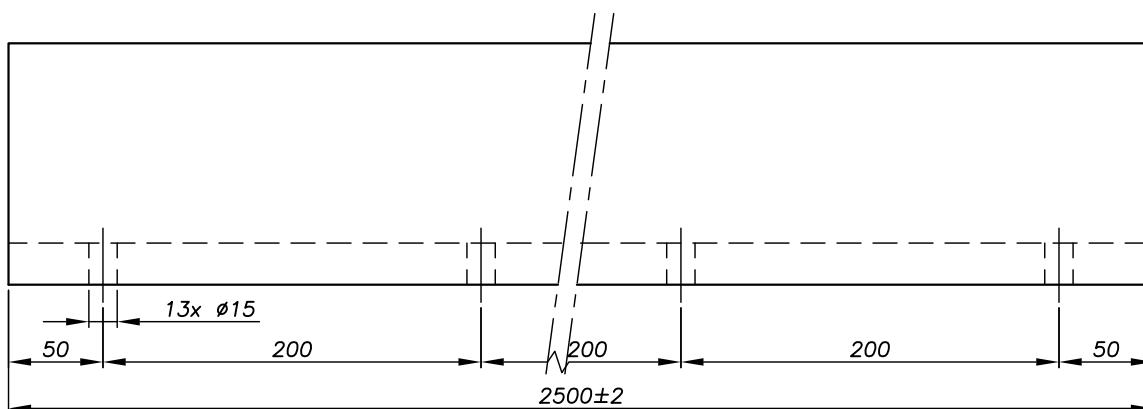
Length	2 500 mm / 5 000 mm (on request)
Width	165 mm
Height of profile	128 mm
Material	Aluminum
Type of application	Residential / public / Stadium
Type of mounting	Offset floor
Thickness of glass	24 > 34 mm
Height of guardrail	Standard: 2 100 mm
Profile finish	Anodized aluminum ,raw, RAL
Fixing the profile	From 200 to 400 mm depending on the characteristics of your project.



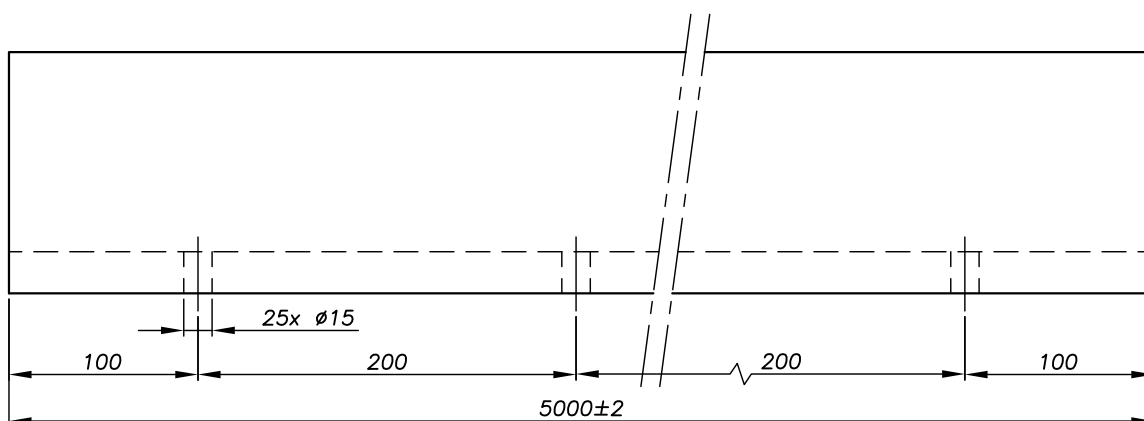
**FOR MORE INFORMATION
ON ANCHORING THE PROFILE:**
see our country performance guide
or the Technical Advice for each profile.

TECHNICAL PLANS

► 2 500 mm - Reference **0070RAIL18L**



► 5 000 mm - Reference **0070RAIL28L (on request)**



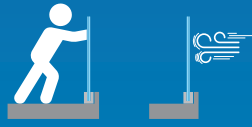
DRAINAGE & EXPANSION

For more details, see **page 50**

FLOOR MOUNTING



PROFILE 7019



THICKNESS OF GLASS
12 > 25.52 mm

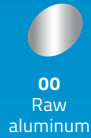


APPLICATION | RESIDENTIAL | PUBLIC | STADIUM

COMPATIBILITY OF WEDGES
One Side & Double Side



POSSIBLE FINISHES



ADJUSTMENT OF GLASS
+ or - 15 mm



TESTED & APPROVED



All the elements compatible with the **7019 PROFILE** can be found in this section

WEDGES, CLADDINGS & ACCESSORIES > p.96



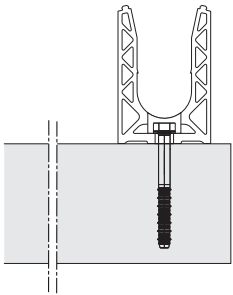
sadev.com



BIM
PRODUCT

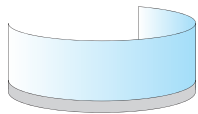
► Reference **0070RAIL19**

TYPE OF USE

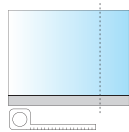


FLOOR MOUNTING

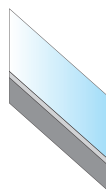
DIFFERENT SPECIFICITIES



CURVED



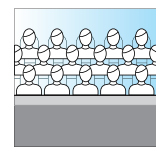
MADE TO MEASURE



INCLINE




HIGH LEVEL



HIGH PERFORMANCE

TECHNICAL SPECIFICATION AND INTERNATIONAL CERTIFICATION

Solutions tested according to regulations of different countries  can be found in the country performance guide.

FLOOR MOUNTING PROFILE 7019



THICKNESS OF GLASS
12 > 25.25 mm

► Reference **0070RAIL19**

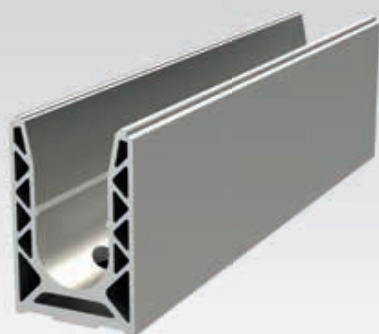
TESTED & APPROVED



HIGH
PERFORMANCE

Application **STADIUM
C5 / UEFA**

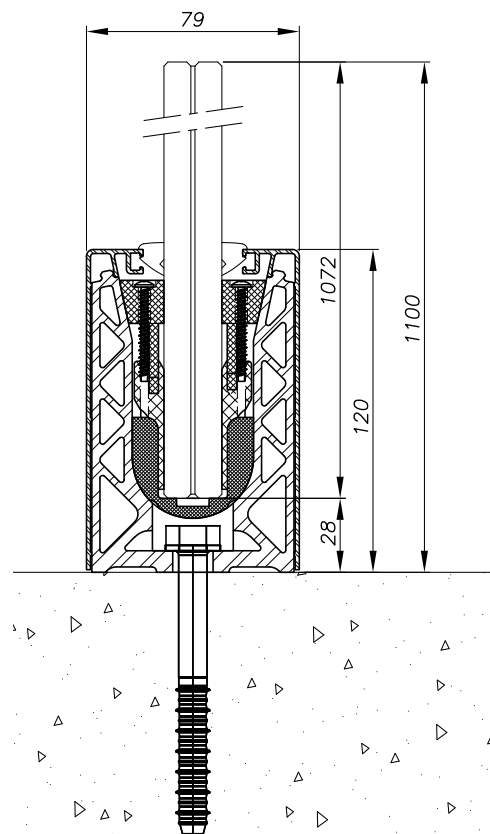
In 12.12 SGP



TECHNICAL CHARACTERISTICS

Length	2 500 mm / 5 000 mm
Width	75 mm
Height of profile	112 mm
Material	Aluminum
Type of application	Residential / public / Stadium
Type of mounting	Floor
Thickness of glass	12 > 25.52 mm
Height of guardrail	Standard: 2 100 mm
Profile finish	Anodized aluminum ,raw
Fixing the profile	Every 150 mm

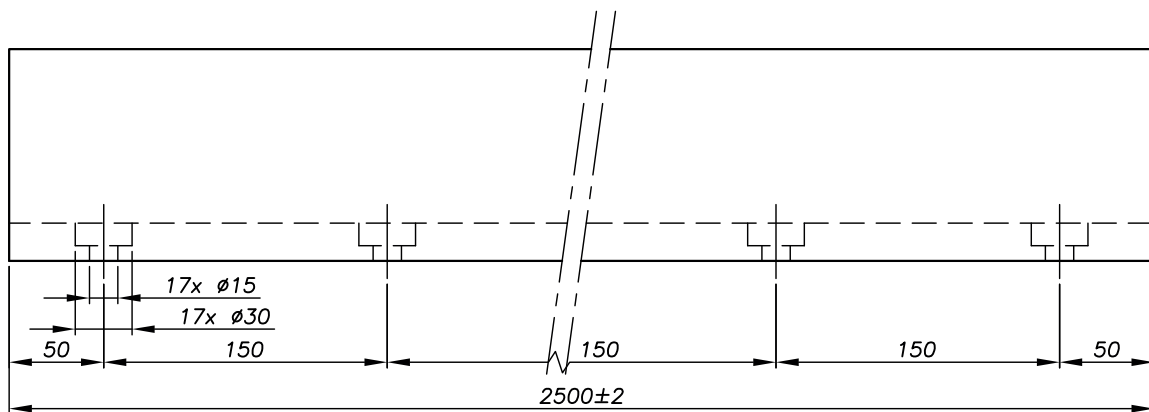
**FOR MORE INFORMATION
ON ANCHORING THE PROFILE:**
see our country performance guide
or the Technical Advice for each profile.



TECHNICAL PLANS

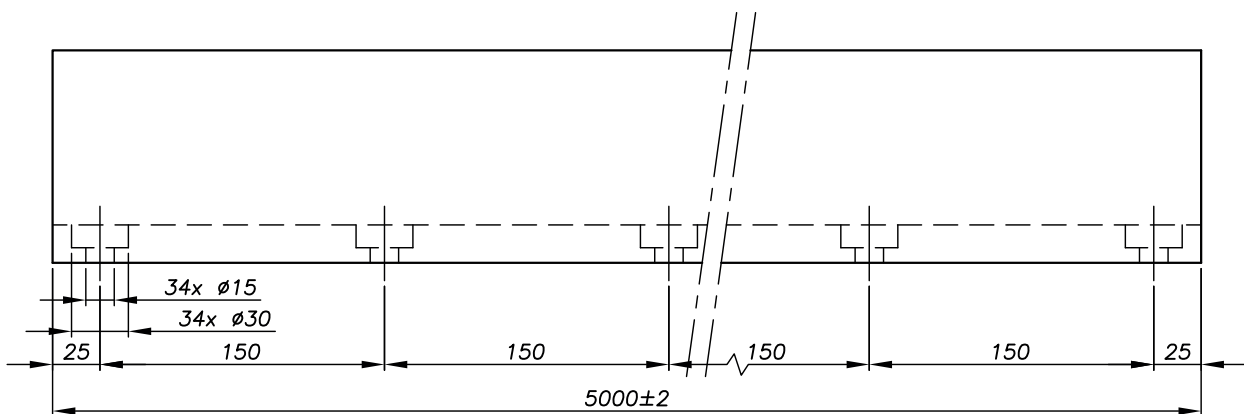
▶ 2 500 mm - Reference 0070RAIL19

▶ 2 500 mm - Undrilled profile - Reference 0070RAIL209



▶ 5 000 mm - Reference 0070RAIL29

▶ 5 000 mm - Undrilled profile - Reference 0070RAIL509



DRAINAGE & EXPANSION

For more details, see **page 50**

INSTRUCTIONS FOR ASSEMBLY

ONE SIDE WEDGE



INSTRUCTIONS BEFORE INSTALLATION

Drill the support using a tool suitable for the substrate.

If the substrate is uneven, level the profile by adding our Sadev wedging set.

Adjust and fix the rail to the fixing points using the appropriate wrench.

- 1 Apply pressure to the tool **ONE SIDE** to insert the wedges into the rail.
- 2 Clip on the exterior cladding.
- 3 Clip on the exterior seal.
- 4 Insert the glass and adjust to plumb using the level.
- 5 Insert and screw on the top wedge.
- 6 Clip on the cladding.
- 7 Insert the press-in gasket.

Glue the end cap to the end of the rail.



INSTALLATION INSTRUCTIONS

www.sadev.com/downloads

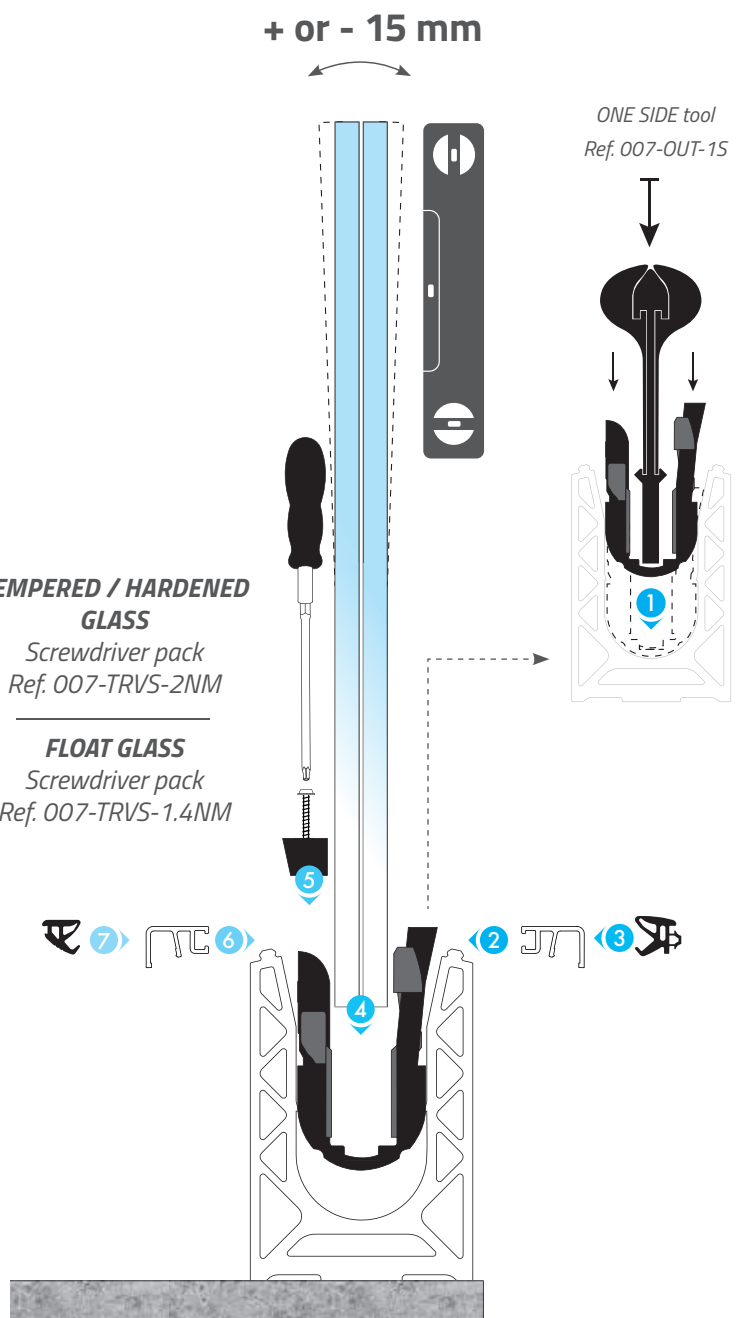


TEMPERED / HARDENED GLASS

Screwdriver pack
Ref. 007-TRVS-2NM

FLOAT GLASS

Screwdriver pack
Ref. 007-TRVS-1.4NM



DOUBLE SIDE WEDGE



INSTRUCTIONS BEFORE INSTALLATION

Drill the support using a tool suitable for the substrate.

If the substrate is uneven, level the profile by adding our Sadev wedging set.

Adjust and fix the rail to the fixing points using the appropriate wrench.

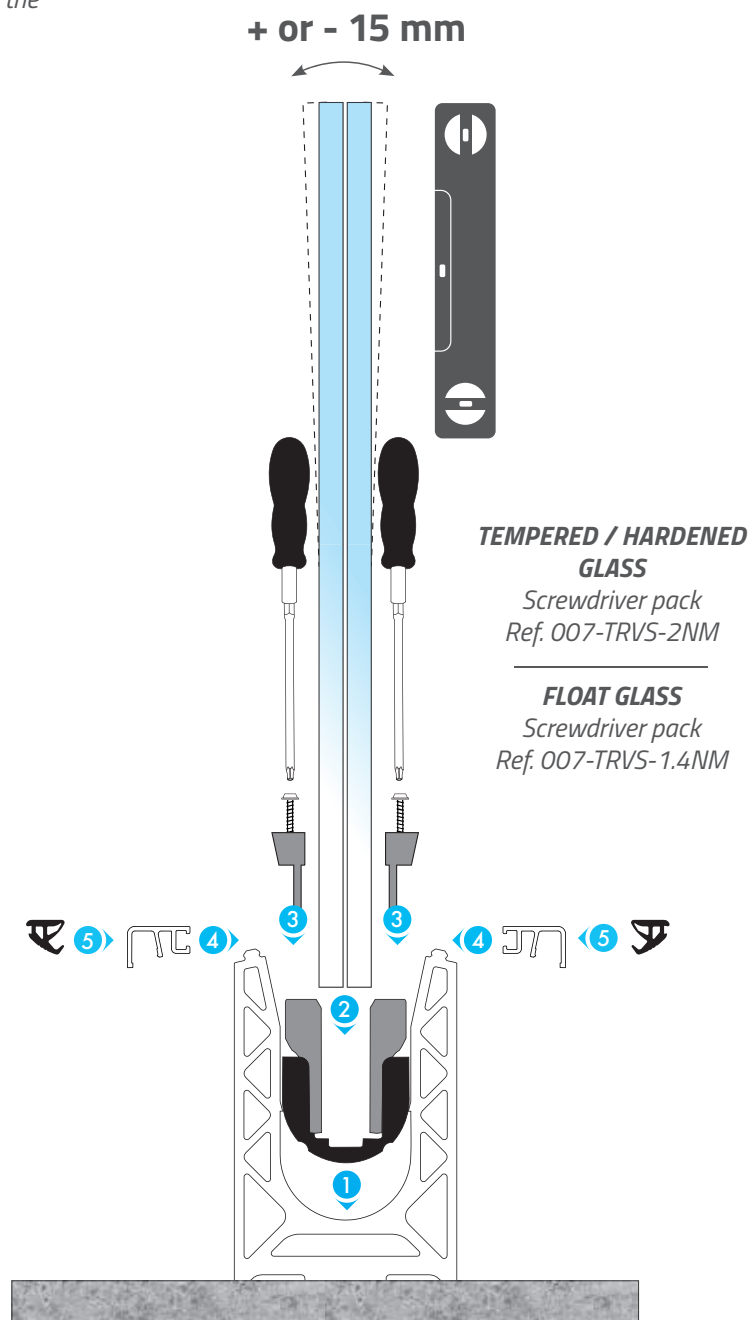
- 1 Install the wedges in the rail.
- 2 Insert the glass and adjust to plumb using the level.
- 3 Insert and screw in the top wedges.
- 4 Clip on the claddings.
- 5 Insert the press-in gasket.

Glue the end cap to the end of the rail.



INSTALLATION INSTRUCTIONS

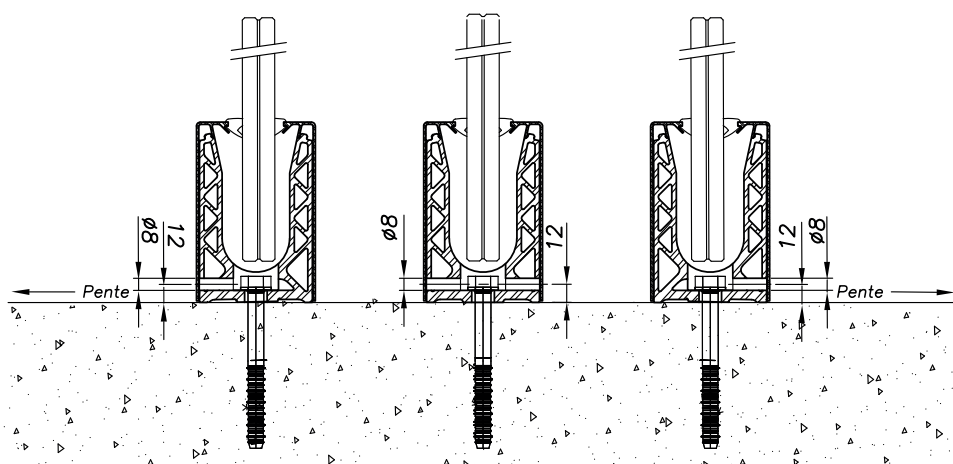
www.sadev.com/downloads



DRAINAGE & EXPANSION

DRAINAGE

Drainage in the SABCO guardrail is achieved by drilling the aluminum profile and/or the finishing cladding according to the diagrams below. As the rail must be set in a straight line (without distortion), the water drains naturally from both sides of the rail. Depending on the situation, holes with a diameter of 8 mm can be drilled on site in the plug and/or in the profile for water drainage.



EXPANSION

Taking account of expansion to ensure performance of the profiles.

		Aluminum				
2 500 mm		Maximum profile temperature				
Profile temperature during installation		40°C/104°F	50°C/122°F	60°C/140°F	70°C/158°F	80°C/176°F
	-20°C/-4°F	4 mm	4 mm	5 mm	5 mm	6 mm
	-10°C/-14°F	3 mm	4 mm	4 mm	5 mm	5 mm
	0°C/32°F	3 mm	3 mm	4 mm	4 mm	5 mm
	10°C/50°F	2 mm	3 mm	3 mm	4 mm	4 mm
	20°C/68°F	1 mm	2 mm	3 mm	3 mm	4 mm
	30°C/86°F	1 mm	1 mm	2 mm	3 mm	3 mm
5 000 mm		Maximum profile temperature				
Profile temperature during installation		40°C/104°F	50°C/122°F	60°C/140°F	70°C/158°F	80°C/176°F
	-20°C/-4°F	7 mm	8 mm	9 mm	11 mm	12 mm
	-10°C/-14°F	6 mm	7 mm	8 mm	9 mm	11 mm
	0°C/32°F	5 mm	6 mm	7 mm	8 mm	9 mm
	10°C/50°F	4 mm	5 mm	6 mm	7 mm	8 mm
	20°C/68°F	3 mm	4 mm	5 mm	6 mm	7 mm
	30°C/86°F	1 mm	3 mm	4 mm	5 mm	6 mm

➤ Got any questions?

Contact us on +33 (0)4 50 08 39 00 or on our website

📖 **INSTALLATION INSTRUCTIONS:** www.sadev.com/downloads